



DEEP SOIL AREA CALCULATIONS:

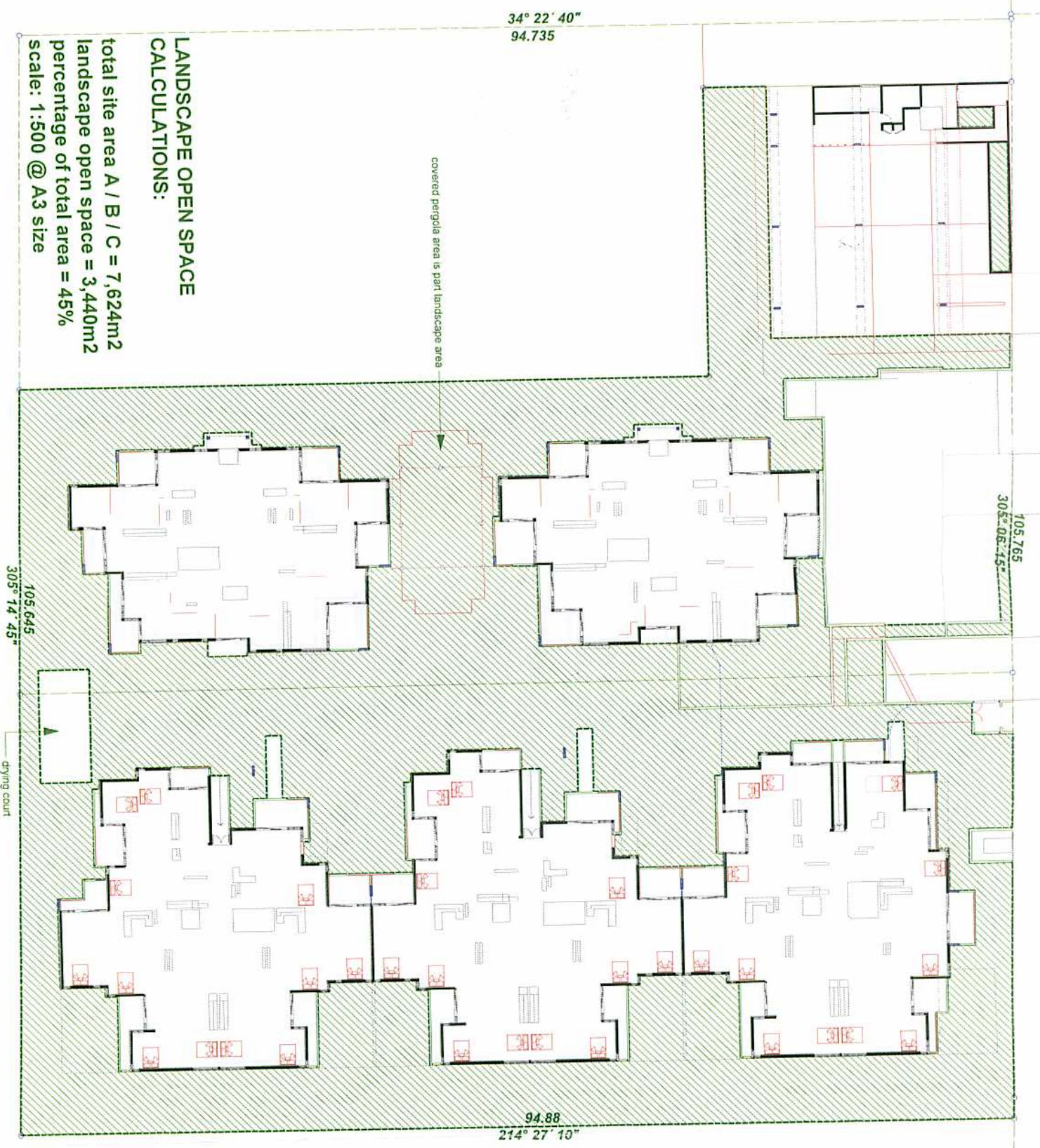
total site area A / B / C = 7,624m²
 total deep soil area = 2,893m²
 percentage of total area = 37.9%
 percentage of landscape area = 84%
 scale: 1:500 @ A3 size

NOTE: concrete lids over basement carparking have been excluded from deep soil landscaping. They will however support min 400mm-500mm soil overburden & will be part of overall landscape open space calculation

NOTE: concrete lids over basement carparking have been excluded from deep soil landscaping. They will however support min 400mm-500mm soil overburden & will be part of overall landscape open space calculation

NOTE: concrete lids over basement carparking have been excluded from deep soil landscaping. They will however support min 400mm-500mm soil overburden & will be part of overall landscape open space calculation

NOTE: concrete lids over basement carparking have been excluded from deep soil landscaping. They will however support min 400mm-500mm soil overburden & will be part of overall landscape open space calculation



**LANDSCAPE OPEN SPACE
CALCULATIONS:**

total site area A / B / C = 7,624m²
landscape open space = 3,440m²
percentage of total area = 45%
scale: 1:500 @ A3 size

